

The PORTLAND WINTER KO SECTIONAL January 29-31, 2010

OPEN STRATS: 0-750, 750-2000, 2000+

SITE: Kliever Armory

10000 NE 33rd Drive, Portland 97211

Off Marine Drive

503-280-8160

FRIDAY, January 29 1:30

Stratified Open Pairs

0-300 Pairs

FRIDAY, January 29 7:30

Bracketed KO teams, Round 1

Stratified Open Pairs (Open Strats)

0-300 Pairs (stratified)

0-50 Pairs (# of tables permitting)

SATURDAY, January 30

1:00 Bracketed KO teams, Round 2

Stratified Open Pairs (playthrough, session 1, Open Strats)

SINGLE SESSION PAIRS WELCOME

0-300 Stratified Pairs (0-100, 100-200, 200-300)

0-50 pairs (stratified--# of tables permitting)

7:00 Bracketed KO teams, Round 3

Stratified Open Pairs, session 2, Open Strats

SINGLE SESSION PAIRS WELCOME

0-300 Stratified Pairs, (0-100, 100-200, 200-300)

0-50 Pairs (stratified --# of tables permitting)

SUNDAY, January 31

10:30

Compact Bracketed Knockout Teams (Rounds 1 & 2)

(Note: Entry buys this & pm session, either compact or swiss)

Single Session Swiss Teams (0-300) --Win/Loss

TBA

Compact Bracketed Knockout Teams (Rounds 3 & 4)

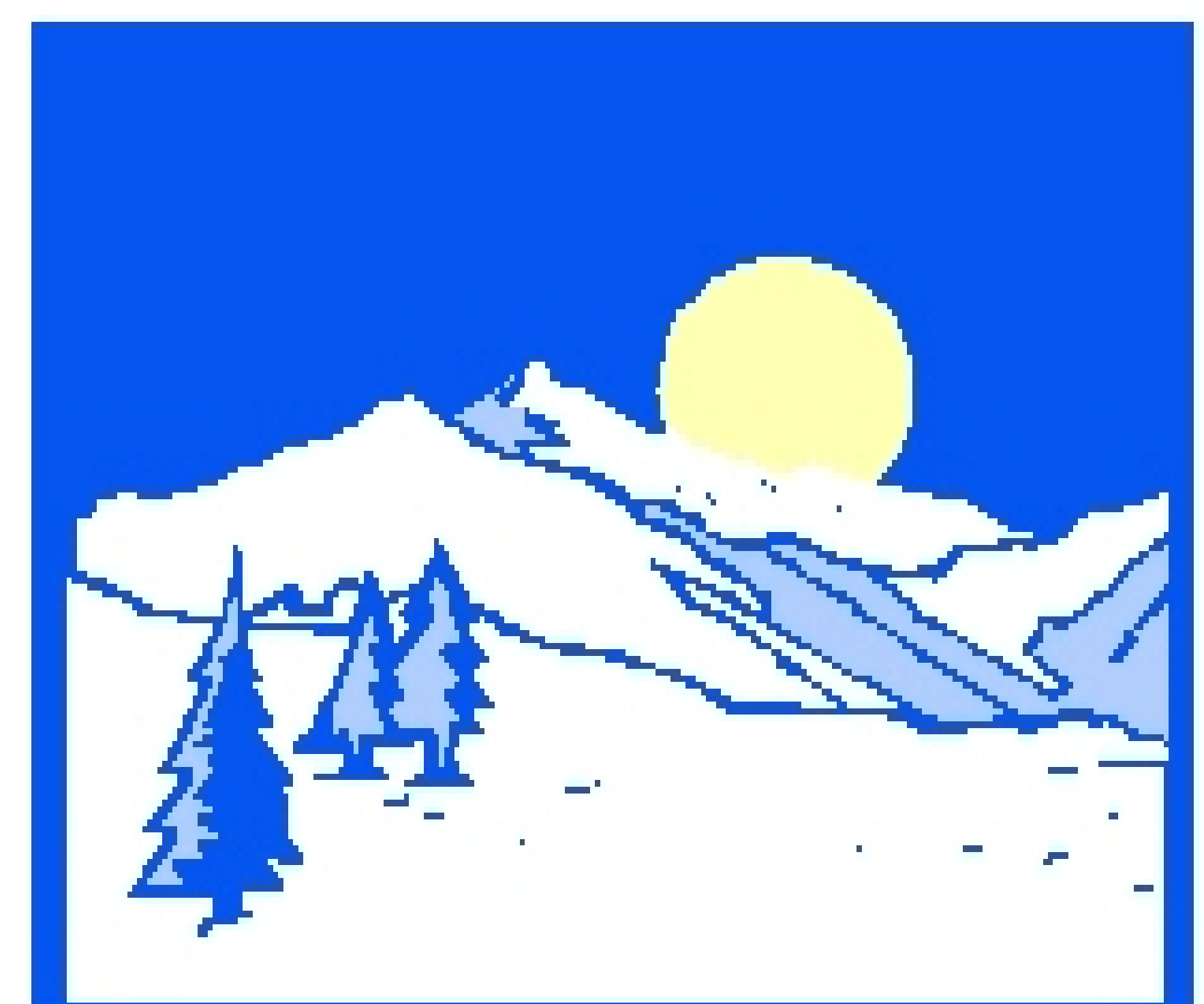
Stratified Swiss Teams (Single Session, Open Strats)

0-300 Swiss Teams (Single Session)



**New Players (0-5)
PLAY FREE**

Free Coffee and Snacks



Head Director: John Ashton

Tournament Mgr: Alan Johnson (503)-771-3316 (apeace01@comcast.net)

Partnership: Jerry Wershba (503) 384-0229 xcessjhw@comcast.net

\$8.00 per session, \$9.00 for unpaid and non ACBL members Sanction # S1001095