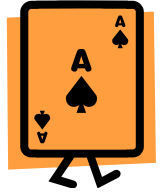


# SALINA'S 67<sup>TH</sup> ANNUAL SECTIONAL

## BRIDGE TOURNAMENT

Friday, Saturday, and Sunday

November 10, 11, and 12



### Webster Conference Center

2601 N. Ohio St., Salina, KS 67401

(Northwest Corner of I-70 and Ohio Exit)

### Schedule

**Friday** 10:00am and 200pm

Lunch Served between sessions

**Saturday** 10:00am and 2:00pm

Lunch Served between sessions

**Sunday** 10:00am Swiss Teams



Sunday

Mid Day

**Brookville**

**Chicken**

**Dinner**

Served

### STRATIFICATIONS:

A = 1500 +

B = 500 – 1500

C = 0 – 500

### Prices

**\$13.00** per session for ACBL Members

**\$16.00** per session for Non-Members

**\$120.00** for each 4-person Swiss Team/\$14 for extra person

A newcomer game will be held on Friday and Saturday, both sessions.

0-200 Masterpoints

**Tournament Director: Chris Patrias**

**Tournament Chairpersons: Carol Sunde ([brat98ks@sbcglobal.net](mailto:brat98ks@sbcglobal.net))**

**Georgia Reynolds ([pooze51@hotmail.com](mailto:pooze51@hotmail.com))**

For help with partnerships, contact either of the co-chairs.



*Free Coffee, Tea, Water, Snacks*

*This facility is designated as non-smoking*