

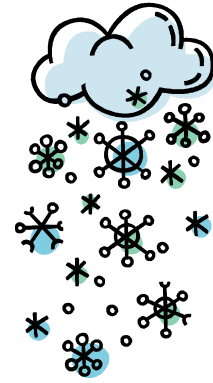
# Unit 116 Winter Sectional

sanction # 1701036

January 27, 28, 29, 2017

## Main Transit Fire Hall

6777 Main St. Williamsville, NY (Buffalo) 14221



### Friday 1/27 Pairs

10:30 am\* Single session stratified A/B/C pairs  
2:30 pm\* Single session stratified A/B/C pairs  
10:30 am\* & 2:30pm\* Double session stratified A/B/C pairs

### Saturday 1/28 Pairs

10:30 am Single session stratified A/B/C pairs  
2:30 pm\* Single session stratified A/B/C pairs  
10:30 am\* & 2:30pm\* Double session stratified A/B/C pairs

\*Note New Start Times (Lunch will be available for purchase)  
After January 1- pre-order lunch on web site [www.unit116.com](http://www.unit116.com)  
Shorter Break for our Winter Sectional

### Sunday 1/29 Swiss Teams

Swiss Teams – (Dupli-Swiss – prepared boards & hand records)  
10:30 am\* Stratified A/B/C (with short break)  
\*Note New Start Time (Lunch will be available for purchase)  
After January 1- pre-order lunch on web site [www.unit116.com](http://www.unit116.com)

Stratum "A" – 2000 + Stratum "B" - 500 to 2000 Stratum "C" - 0 to 500  
Pairs and teams stratified by average masterpoints

ENTRY FEE per player per session = \$10.00 members/\$13.00 non or unpaid members.

### TOURNAMENT INFORMATION:

Chair: Betty Metz 716-773-7398 [bettymetz@roadrunner.com](mailto:bettymetz@roadrunner.com)  
Co-chair: Gay Simpson 716-836-2519 [Qgs8696@gmail.com](mailto:Qgs8696@gmail.com)  
Partnership : Dian Petrov – 716-688-1226 [dpetrov@roadrunner.com](mailto:dpetrov@roadrunner.com)

HOTELS: Clarion Hotel 6700 Transit Rd. Williamsville 14221 (2.5 mi)  
Sleep Inn & Suites 100 Holtz Dr. Cheektowaga 14225 (1.9 mi)